



NDB

PT NAVIGATE DIGITAL BOUNDARIES

• COMPANY PROFILE • 2026

Navigate Digital *Boundaries*

Enterprise Architecture · Industrial Orchestration
Big Data Engineering · Intelligent Systems

Builders of mission-critical digital infrastructure. We are not merely a software development company — we design and operate the architectural foundations that keep enterprises running.

50+

Combined professionals

7

Products in portfolio

4

Core expertise pillars

10+

Years of practice

 01 · ABOUT THE COMPANY

Builders of *mission-critical* digital infrastructure.

PT Navigate Digital Boundaries (NDB) is a technology company specializing in Enterprise Architecture, Industrial Orchestration Platforms, Big Data Engineering, and Intelligent Systems Development.

NDB was established to design and build large-scale digital systems that are architecturally stable, performance-driven, compliance-ready, and seamlessly integrated across people, machines, and enterprise systems. Our focus goes beyond application development — we create technology foundations that enable organizations to operate reliably, scale sustainably, and adapt to evolving operational demands.

We are not merely a software development company; we are builders of mission-critical digital infrastructure.

 02 · WHY NDB

"Many systems fail not due to a lack of developers, but because of the absence of strong *architectural leadership*."

NDB exists to —



Strong foundations

Design strong technological foundations that support long-term growth.



Managed complexity

Manage and control system complexity through structured architecture.



Sustainable scale

Ensure sustainability and scalability across evolving operational needs.



*NDB is an enterprise architecture and industrial orchestration company dedicated to building large-scale technological foundations through **precision engineering, integrity, and sustainable system design.***

03 · VISION & MISSION

A vision built on architecture. A mission measured in *systems*.



Vision

To become a leading **enterprise architect** and **industrial platform builder** that enables organizations to operate through **resilient architecture**, **intelligent orchestration**, and **sustainable digital systems**.



Mission



01
Design Scalable Enterprise Architecture

Modernize legacy environments through structured, future-ready foundations.



02
Build Industrial Orchestration Platforms

Unify workflows, devices, applications, and data into measurable operational ecosystems.



03
Enable Data-Driven Transformation

Deliver Big Data and ETL solutions plus intelligent real-time monitoring systems.



04
Embed Governance & Sustainability

Make auditability, compliance, and long-term adaptability part of every system.

04 · CORE EXPERTISE

Four pillars that shape our *engineering practice*.



Enterprise Architecture & System Modernization

5.1

Large-scale systems · Legacy modernization · Technical leadership

Large-scale system architecture redesign · Legacy monolith refactoring into clean architecture · High-complexity data migration and cleansing · Database structure simplification · Cross-vendor technical leadership and governance.

IDEAL FOR

Financial institutions · Government organizations · Enterprises operating legacy systems exceeding 10 years.



Industrial Orchestration Platform

5.2

Next Evolution of BPM — for people, machines, and enterprise systems

Form Engine · Process Domain Management · Workflow Engine · Document Management System · Data Intake & Ingestion Layer · Enterprise Integration Layer (SAP, ERP, APIs) · Reporting & Audit Trail System · PLC / IoT / ETL Agents.

CORE OBJECTIVE

To orchestrate people, machines, and enterprise systems within a controlled, measurable, and transparent operational environment.



Big Data & ETL Engineering

5.3

Data migration, cleansing, modeling at enterprise scale

Migration of large legacy datasets across hundreds of tables · Enterprise-scale data cleansing · ETL orchestration and automation · Enterprise data modeling · Analytical and reporting foundations.

SUITABLE FOR

Core system modernization · Multi-database consolidation · Data-driven digital transformation.



Simulator & Intelligent System Engineering

5.4

3D simulation, real-time monitoring, event-driven systems

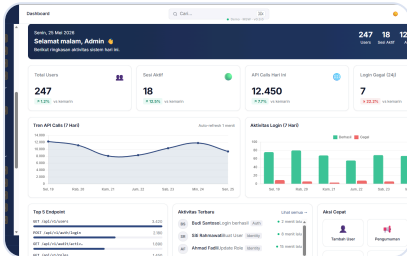
3D simulation platforms (Unity-based) · Real-time monitoring systems · Hybrid .NET and simulation engines · Event-driven and immersive technology systems.

DEMANDS

High-precision logic · Real-time processing · Architectural stability · Cross-domain integration expertise.

05 · OUR PRODUCTS

Six products. One architectural discipline.



6.1 **NDB Platform**

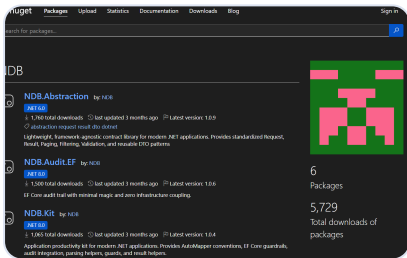
LIVE · PRODUCTION

Build enterprise applications 60–80% faster — with production-ready foundations, not boilerplate.

An opinionated full-stack platform that codifies our architecture-first discipline into runnable starter code, contract libraries, and operational scaffolding.

Stats · 1,300+ tests · 14/14 critical findings fixed · 29 ADR locked · 4 NuGet packages

.NET 10 · Vue 3 · PostgreSQL / SQL Server



6.2 **NDB .NET Core Library**

OPEN SOURCE

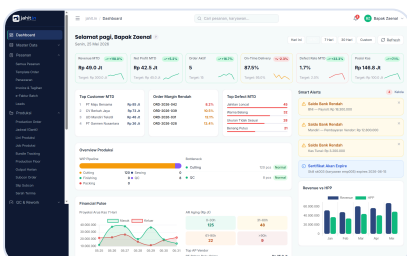
Open-source .NET libraries that codify our architecture-first discipline.

Four NuGet packages, multi-target .NET 10 to .NET 8 — drop them into any solution to get audit-ready data access, CQRS, JWT, and project templates without writing boilerplate.

Packages · NDB.Platform.Core · NDB.Platform.Data · NDB.Platform.API · NDB.Platform.Templates

Distribution · nuget.org/profiles/NDB · github.com/ndbco

.NET 10 multi-target to .NET 8



6.3 **jahit.in**

BETA

All your garment workshop operations, in one place.

Multi-tenant SaaS ERP for Indonesian garment workshops. Solves five pain points generic ERPs miss: opaque cash flow, blind material costs, untracked rework, fraud-prone payroll, stalled production. Web + Mobile + Tablet Kiosk (PWA offline-capable).

Modules · Order · Production & Job Order · QC & Rework · Material & Warehouse · HR & Payroll · Per-Order Finance · Dashboard

jahit.in.ndb.co.id · jahit-in-kiosk.ndb.co.id



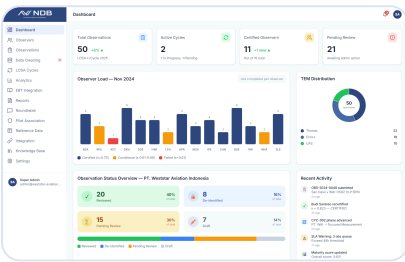
6.4 **SIERRA**

LIVE · PRODUCTION

The technical operations brain for water utilities — field to executive in one view.

Multi-application platform for water utility companies (PDAM / PERUMDAM): Web admin + Field PWA (offline-first) + TV dashboard for direksi. Built for utility realities — intermittent connectivity and evidence trails per field visit.

sierra.ndb.co.id



6.5 **LOSA Platform**

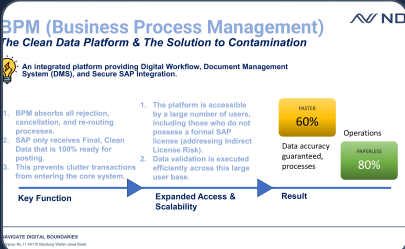
LIVE

Digital safety observation, the way ICAO intended.

Multi-tenant SaaS digitalizing Line Operations Safety Audit per ICAO Doc 9803 — for aviation safety and oil & gas (IOGP 690). Six program types. Offline-first cockpit form, AES-256-GCM de-identification, Cohen's Kappa observer calibration, Data Verification Roundtable.

Compliance · ICAO Doc 9803 · FAA AC 120-90 · IOGP 690 · UU PDP No. 27/2022

losa.ndb.co.id



6.6 **NDB BPM**

LIVE · DEMO

The Clean Data Platform & The Solution to SAP Contamination.

Business Process Management platform engineered as **Acceleration & Enforcement Layer** on top of SAP. Absorbs all rejection, cancellation, and re-routing in approval workflows — so SAP receives only final, clean, audit-ready data via official BAPI / Web Services.

60%

PASTER

80%

PAPERLESS

**Eliminates Indirect
SAP License**

bpm.ndb.co.id · demo: admin / password

 06 · HOW WE WORK

Three principles, *non-negotiable.*

NDB supports organizations operating in complex and mission-critical environments by delivering enterprise architecture, orchestration platforms, and intelligent system integration designed for scalability, reliability, and long-term sustainability.

01



Architecture First

Critical architectural decisions are defined at the early stages of every engagement to minimize long-term technical debt, reduce operational risk, and ensure scalable system foundations.

02



Crisis Resilient Engineering

We are experienced in delivering complex initiatives within demanding technical and organizational environments, maintaining stability and progress even under high-pressure project conditions.

03



Integrity Driven Execution

We prioritize measurable outcomes over unnecessary complexity. Auditability, clear system boundaries, and responsible risk management are embedded as core principles in every implementation.

07 · TECHNOLOGY STACK

A *robust* and scalable technology ecosystem.

NDB utilizes a robust and scalable technology ecosystem designed to support enterprise-grade architecture, industrial integration, and data-driven operations.



Backend & Architecture

- ◆ .NET 10 (multi-target to .NET 8)
- ◆ Clean Architecture Principles
- ◆ Modular Monolith & Contextual Microservices
- ◆ EF Core with Audit Enablement
- ◆ CQRS via Mediator.SourceGenerator
- ◆ Hangfire · Serilog



Internal Libraries — Open Source

- ◆ **NDB.Platform.Core** — contract layer
- ◆ **NDB.Platform.Data** — Audit.EF + CodeGen.EF
- ◆ **NDB.Platform.API** — JWT + Hangfire + Swagger
- ◆ **NDB.Platform.Templates** — dotnet new



Data & Analytics

- ◆ Microsoft SQL Server · PostgreSQL 15+
- ◆ Enterprise ETL Engine
- ◆ Data Ingestion Layer
- ◆ Reporting Architecture
- ◆ Redis (caching)



Industrial & Integration

- ◆ PLC Integration
- ◆ Modbus & Industrial Protocols
- ◆ SAP Integration (BAPI / Web Services)
- ◆ RESTful Enterprise APIs
- ◆ OPC UA · MQTT (IoT)



Frontend

- ◆ Vue 3 (Composition API) · React 18+
- ◆ Vite · TypeScript
- ◆ Tailwind CSS · shadcn-vue / shadcn/ui
- ◆ Pinia / Zustand · TanStack Query



08 · LEADERSHIP

The person behind the *discipline.*

FOUNDER & PRINCIPAL ARCHITECT

Ilyasin Hafid

Enterprise .NET

Industrial Automation

System Integration

Architecture Leadership

NDB is founded and led by **Ilyasin Hafid**, Principal Architect & Founder, with deep roots in enterprise .NET, industrial automation, and large-scale system integration.

His track record spans complex software & system integration engagements across **pension administration, water utilities, and aviation training systems** — work that demanded both architectural rigor and the ability to operate where legacy and modern systems must coexist.

Every NDB product, library, and engagement is shaped by an **architecture-first** discipline applied across mission-critical systems for over a decade.

DOMAIN EXPERIENCE



Financial Services & Pension Institutions



Manufacturing & Industrial Enterprises



Government & Public Sector



Workflow-Intensive Enterprises



Smart Infrastructure & Industrial IoT



Simulator & Intelligent Systems

"Architecture isn't decoration. It's what determines whether your system survives the year after launch."

— ILYASIN HAFID



PRINCIPAL ARCHITECT MANDATE

10+ years · mission-critical systems · architecture-first practice



09 · INDUSTRIES WE SERVE

Domains where architecture decides *resilience*.

**Financial Services & Pension**

01

Secure, compliant, and audit-ready system architectures to support high-volume transactions and long-term data governance requirements.

**Manufacturing & Industrial**

02

Operational efficiency through system integration, industrial monitoring, and orchestration between operational technology and enterprise platforms.

**Government & Public Sector**

03

Digital modernization through scalable platforms that improve transparency, operational control, and public service delivery.

**Workflow-Intensive Enterprises**

04

Complex organizational processes optimized through structured workflow orchestration, automation, and centralized operational visibility.

**Smart Infrastructure & Industrial IoT**

05

Integrating connected devices, real-time monitoring, and data intelligence to enable intelligent infrastructure management and operational insight.

Let's *navigate* the boundary together.



Have a system that's hard, critical, or stuck?

Let's navigate the boundary together.



EMAIL
admin@ndb.co.id



WHATSAPP
[+62 857-2231-5553](https://wa.me/6285722315553)



WEBSITE
ndb.co.id



GITHUB
github.com/ndbco



ADDRESS
Jl. Trunojoyo No. 11, 40115, Bandung Wetan, Jawa Barat, Indonesia



SCAN TO VISIT WEBSITE
ndb.co.id



SCAN TO WHATSAPP
[+62 857-2231-5553](https://wa.me/6285722315553)